

CERTIFICATE OF ANALYSIS

PRODUCT NAME: Sports Cream
PRODUCT STRENGTH: 400 mg
LOT NUMBER: 20252-19
BEST BY DATE: 09/22/2022
HEMP EXTRACT LOT: [JP090319B7](#)

[*Click on the links to view third-party reports*](#)

Physical Attributes

Test	Method	Specification	Results
Color	SOP-100	white to off white	PASS
Odor	SOP-100	Blend of Menthol, Camphor, Eucalyptus, Lavender, Rosemary, Wintergreen & Marjoram.	PASS
Appearance	SOP-100	Creamy smooth cream consistency with medium viscosity	PASS
Primary Package Eval.	SOP-132	Container clean and free of filth. Lid intact.	PASS
Secondary Package Eval.	SOP-132	Labeling Compliance Checked, Cartons sturdy and clean. Sufficient cushion material exists. Box taped and secure.	PASS

Review of Third-Party Analysis

Panel	Method	Specification	Results	Pass/Fail
Potency - Total CBD	SOP-111	380-500 mg CBD LOQ**: 10 PPM† (0.001%)	518.6 mg	PASS
Potency - D9-THC	SOP-111	None Detected LOQ: 10 PPM (0.001%)	ND	PASS
Compliant Pesticide Panel	SOP-111	Action Limits for Oregon Pesticides used in Cannabis	ND	PASS
Microbial - Stec E.Coli	SOP-111	Complies with USP 61/62	Below LOD	PASS
Microbial - Salmonella	SOP-111	Complies with USP 61/62	Below LOD	PASS
Microbial - Mold	SOP-111	Complies with USP 61/62	Below LOD	PASS
CA Compliant Heavy Metal Panel	SOP-111	Arsenic (As): ≤1.5 PPM Cadmium (Cd): ≤0.5 PPM Mercury (Hg): ≤1.0 PPM Lead (Pb): ≤0.5 PPM	Below LOQ	PASS

* Level of Quantitation, † Parts Per Million

Quality Certified by:

Kei Horikawa

10/02/2020

Kei Horikawa

Date

Quality Control Manager



total cannabinoids
532 mg
 per
118mL

Δ^9 -THC 0.0 mg
 CBD 518.6 mg

THCa 0.0 mg
 CBDa 0.0 mg

total THC 0.0 mg
 total CBD 518.6 mg

Batch 20252-19

This Product Has Been Tested and Complies with 7USC1639o(1) Definition of Hemp



Stillwater Laboratories

https://portal.a2la.org/scopepdf/4961-01.pdf

Sample Handling

test ID **B0LWV** sample wt
 type topical order **8365**
 lab ID **0JL76** sample date 9/16/2020
 unit 118mL unit weight **118.0 g**

Methods

method	equipment
weights	MSP-7.3.1.3 AUX120.1
potency	MSP-7.5.1.5 LC-2030
terpenes	MSP-7.5.1.7 QP2020/HS20
pesticides	MSP-7.5.1.8 LC-8060
mycotoxins	MSP-7.5.1.8 LC-8060
microbial	MSP-7.5.1.1 AriaMx RTPCR
solvents	MSP-7.5.1.6 QP2020/HS20
metals	MSP-7.5.1.1 ICPMS2030

topical



Potency	per	118mL	estimated error	Terpenes	%	estimated error	%	estimated error	%	estimated error
tetrahydrocannabinolic acid (THCa)	0%	0.0 mg	± 1.94 mg	terpenes not tested / not required						
Δ^9 -tetrahydrocannabinol (Δ^9 THC)	0%	0.0 mg	± 1.94 mg							
Δ^8 -tetrahydrocannabinol (Δ^8 THC)	0%	0.0 mg	± 1.94 mg							
tetrahydrocannabivarin (THCv)	0%	0.0 mg	± 1.94 mg							
cannabidiolic acid (CBDa)	0%	0.0 mg	± 1.94 mg							
cannabidiol (CBD)	.44%	518.6 mg	± 7.54 mg							
cannabidivarin (CBDv)	0%	0.0 mg	± 1.94 mg							
cannabigerolic acid (CBGa)	0%	0.0 mg	± 1.94 mg							
cannabigerol (CBG)	0%	0.0 mg	± 1.94 mg							
cannabinol (CBN)	.01%	13.8 mg	± 2.28 mg							
cannabichromene (CBC)	0%	0.0 mg	± 1.94 mg							

Solvents	MT limit	0JL76	LOQ	Pesticides (MT)	MT limit	0JL76	LOQ	Pesticides (other)	0JL76	LOQ
				abamectin	0.00 ppm	<10ppb		acephate	0.00 ppm	<10ppb
				acequinocyl	0.00 ppm	<10ppb		acetamiprid	0.00 ppm	<10ppb
				bifenazate	0.00 ppm	<10ppb		aldicarb	0.00 ppm	<10ppb
				bifenthrin	0.00 ppm	<10ppb		azoxystrobin	0.00 ppm	<10ppb
				chlormequat cl.	0.00 ppm	<10ppb		boscalid	0.00 ppm	<10ppb
				cyfluthrin	0.00 ppm	<80ppb		carbaryl	0.00 ppm	<10ppb
				diaminozide	0.00 ppm	<10ppb		carbofuran	0.00 ppm	<10ppb
				etoxazole	0.00 ppm	<10ppb		chlorantraniliprole	0.00 ppm	<10ppb
				fenoxycarb	0.00 ppm	<10ppb		chlorpyrifos	0.00 ppm	<10ppb
				imazalil	0.00 ppm	<10ppb		clofentazine	0.00 ppm	<10ppb
				imidacloprid	0.00 ppm	<10ppb		cypermethrin	0.00 ppm	<10ppb
				myclobutanil	0.00 ppm	<10ppb		diazinon	0.00 ppm	<10ppb
				paclobutrazol	0.00 ppm	<10ppb		dichlorvos	0.00 ppm	<10ppb
				pyrethrins	0.00 ppm	<10ppb		dimethoate	0.00 ppm	<10ppb
				spinosad	0.00 ppm	<10ppb		etofenprox	0.00 ppm	<10ppb
				spiromesifen	0.00 ppm	<10ppb		fenpyroximate	0.00 ppm	<10ppb
				spirotetramat	0.00 ppm	<10ppb		fipronil	0.00 ppm	<10ppb
				trifloxystrobin	0.00 ppm	<10ppb		flonicamid	0.00 ppm	<10ppb

Toxic Metals	MT limit	0JL76	LOQ
arsenic	2 ppm	0.0 ppm	<10ppb
cadmium	4.1 ppm	0.0 ppm	<10ppb
lead	1.2 ppm	0.0 ppm	<10ppb
mercury	0.4 ppm	0.0 ppm	<10ppb

Microbial	MT limit	0JL76	LOQ
<i>E. coli</i>	10 CFU	0 CFU	<10 CFU/g
Salmonella sp.	10 CFU	0 CFU	<10 CFU/g
molds	10000 CFU	0 CFU	<10k CFU/g
Aflatoxin B1,B2,G1,G2	20 ppb	0 ppb	<20 ppb
Ochratoxin A	20 ppb	0 ppb	<20 ppb

Comments

All testing was completed onsite at 6073 US93N, Olney MT. Potency (cannabinoid concentration) is calculated from the equation: [cannabinoid] = [cannabinoid]_{HPLC} x volume_{dilution}/m_{dry}. Terpene concentration is calculated from the equation: [terpene] = (terpene mass)_{GCMS} / m_{dry}. Decarboxyted cannabinoid concentration is calculated from the equation XXX_{total} = 0.877 x XXX_a + XXX. Standards are used to calibrate the resulting data and estimate error using a standard estimate of error method; this is combined with error from weighing and dilution using the propagation of error formula s_g² = Σ (∂f/∂i)² s_i² where i is the contributor to error. The 95% confidence range is calculated from the equation: (concentration) ± t_{CL90} x s_g. Sampling error is not

Certified by:

Kyle Larson, MSc (Biology)
 Deputy Director
 6073 US93N, Olney MT 59927
 406-881-2019 rdb@stwlabs.com

hexythiazox	0.00 ppm	<10ppb
kresoxym-methyl	0.00 ppm	<10ppb
malathion	0.00 ppm	<10ppb
metalaxyl	0.00 ppm	<10ppb
methiocarb	0.00 ppm	<10ppb
methomyl	0.00 ppm	<10ppb
oxamyl	0.00 ppm	<10ppb
permethrins	0.00 ppm	<10ppb
phosmet	0.00 ppm	<10ppb
piperonyl butoxide	0.00 ppm	<10ppb
prallethrin	0.00 ppm	<10ppb
propiconazole	0.00 ppm	<10ppb
pyridaben	0.00 ppm	<10ppb
spiroxamine	0.00 ppm	<10ppb
tebuconazole	0.00 ppm	<10ppb
thiacloprid	0.00 ppm	<10ppb
thiamethoxam	0.00 ppm	<10ppb



This is an amended version of report# 19-012757/D02.R00.
Reason: Updated report formatting.

Product identity: JP090319B7
Laboratory ID: 19-012757-0002

Client/Metric ID:
Sample Date:

Summary

Potency:

Analyte	Result (%)		CBD-Total	81.9%
CBD	81.9		THC-Total	< 0.177%
CBDV†	1.86		(Reported in percent of total sample)	

Residual Solvents:

All analytes passing and less than LOQ.

Pesticides:

All analytes passing and less than LOQ.

Terpenes:

Analyte	Percent by weight	Percent of Total	Analyte	Percent by weight	Percent of Total
(-)-Guaiol†	0.619	35.17%	(-)-caryophyllene oxide†	0.511	29.03%
β-Caryophyllene†	0.450	25.57%	Humulene†	0.0795	4.52%
Linalool†	0.0594	3.38%	(-)-a-Terpineol†	0.0411	2.34%
Total Terpenes†	1.76	100.00%			

Metals:

Less than LOQ for all analytes.

Microbiology:

Less than LOQ for all analytes.

Test results relate only to the parameters tested and to the samples as received by the laboratory. Test results meet all requirements of NELAP and the Pixis quality assurance plan unless otherwise noted. This report shall not be reproduced, except in full, without the written consent of this laboratory. Samples will be retained for a maximum of 30 days from the receipt date unless prior arrangements have been made.



Customer: My CBD Test

Product identity: JP090319B7

Client/Metric ID: .

Sample Date:

Laboratory ID: 19-012757-0002

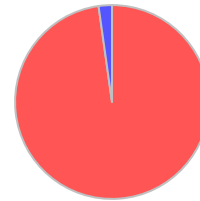
Relinquished by: UPS

Temp: 23.4 °C

Sample Results

Potency Method J AOAC 2015 V98-6 Units % Batch 1909717 Analyze 10/22/19 05:04 PM

Analyte	As Received	Dry weight	LOQ	Notes
CBC†	< LOQ		0.0943	
CBC-A†	< LOQ		0.0943	
CBC-Total†	< LOQ		0.177	
CBD	81.9		0.943	
CBD-A	< LOQ		0.0943	
CBD-Total	81.9		1.03	
CBDV†	1.86		0.0943	
CBDV-A†	< LOQ		0.0943	
CBDV-Total†	1.86		0.176	
CBG†	< LOQ		0.0943	
CBG-A†	< LOQ		0.0943	
CBG-Total†	< LOQ		0.176	
CBL†	< LOQ		0.0943	
CBN	< LOQ		0.0943	
Δ8-THC†	< LOQ		0.0943	
Δ9-THC	< LOQ		0.0943	
THC-A	< LOQ		0.0943	
THC-Total	< LOQ		0.177	
THCV†	< LOQ		0.0943	
THCV-A†	< LOQ		0.0943	
THCV-Total†	< LOQ		0.176	



● CBD
● CBDV

Microbiology

Analyte	Result	Limits	Units	LOQ	Batch	Analyze	Method	Notes
E.coli	< LOQ		cfu/g	10	1909486	10/21/19	AOAC 991.14 (Petrifilm)	X
Total Coliforms	< LOQ		cfu/g	10	1909486	10/21/19	AOAC 991.14 (Petrifilm)	X
Mold (RAPID Petrifilm)	< LOQ		cfu/g	10	1909487	10/21/19	AOAC 2014.05 (RAPID)	X
Yeast (RAPID Petrifilm)	< LOQ		cfu/g	10	1909487	10/21/19	AOAC 2014.05 (RAPID)	X



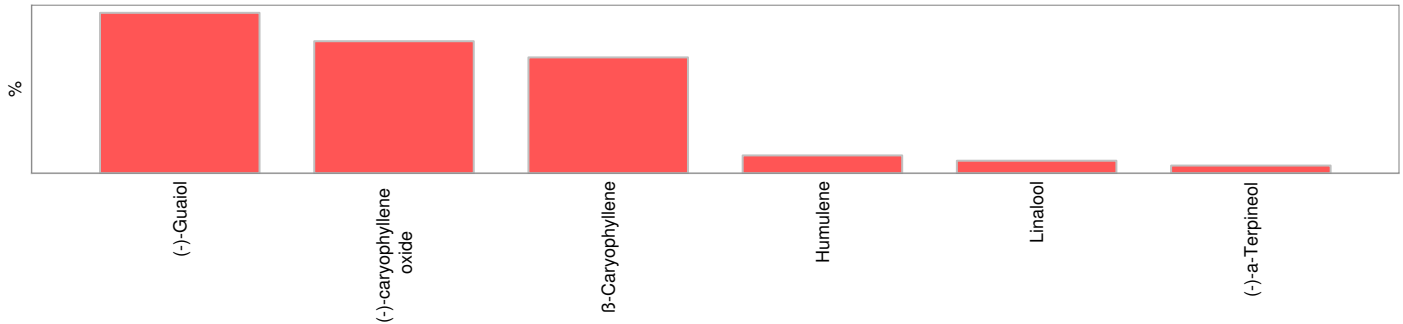
Solvents					Method EPA5021A	Units µg/g	Batch 1909460	Analyze 10/23/19 02:28 PM			
Analyte	Result	Limits	LOQ	Status	Notes	Analyte	Result	Limits	LOQ	Status	Notes
1,4-Dioxane	< LOQ	380	100	pass		2-Butanol	< LOQ	5000	200	pass	
2-Ethoxyethanol	< LOQ	160	30.0	pass		2-Methylbutane	< LOQ		200		
2-Methylpentane	< LOQ		30.0			2-Propanol (IPA)	< LOQ	5000	200	pass	
2,2-Dimethylbutane	< LOQ		30.0			2,2-Dimethylpropane	< LOQ		200		
2,3-Dimethylbutane	< LOQ		30.0			3-Methylpentane	< LOQ		30.0		
Acetone	< LOQ	5000	200	pass		Acetonitrile	< LOQ	410	100	pass	
Benzene	< LOQ	2.00	1.00	pass		Butanes (sum)	< LOQ	5000	400	pass	
Cyclohexane	< LOQ	3880	200	pass		Ethyl acetate	< LOQ	5000	200	pass	
Ethyl benzene	< LOQ		200			Ethyl ether	< LOQ	5000	200	pass	
Ethylene glycol	< LOQ	620	200	pass		Ethylene oxide	< LOQ	50.0	30.0	pass	
Hexanes (sum)	< LOQ	290	150	pass		Isopropyl acetate	< LOQ	5000	200	pass	
Isopropylbenzene	< LOQ	70.0	30.0	pass		m,p-Xylene	< LOQ		200		
Methanol	< LOQ	3000	200	pass		Methylene chloride	< LOQ	600	200	pass	
Methylpropane	< LOQ		200			n-Butane	< LOQ		200		
n-Heptane	< LOQ	5000	200	pass		n-Hexane	< LOQ		30.0		
n-Pentane	< LOQ		200			o-Xylene	< LOQ		200		
Pentanes (sum)	< LOQ	5000	600	pass		Propane	< LOQ	5000	200	pass	
Tetrahydrofuran	< LOQ	720	100	pass		Toluene	< LOQ	890	100	pass	
Total Xylenes	< LOQ		400			Total Xylenes and Ethyl	< LOQ	2170	600	pass	

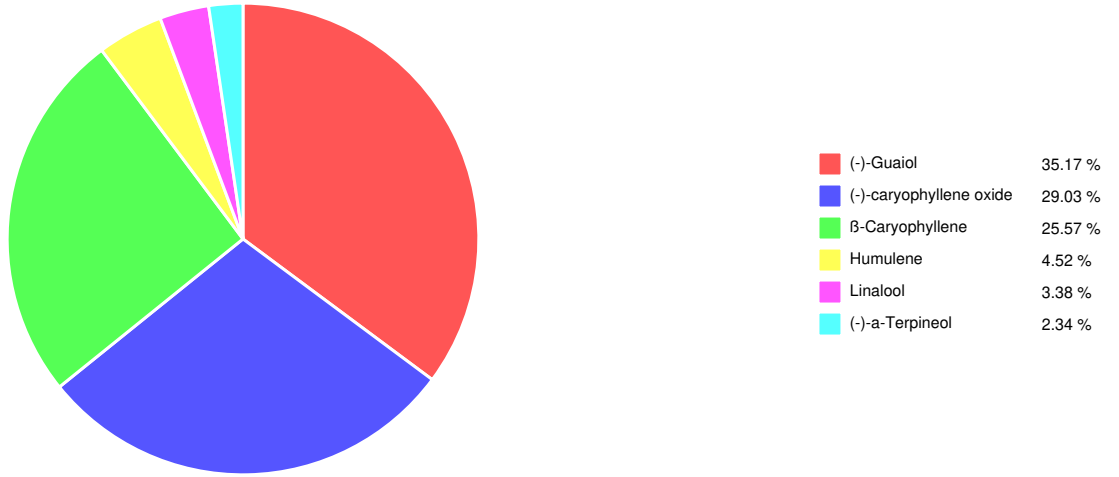


Pesticides											
Method AOAC 2007.01 & EN 15662 (mod) Units mg/kg Batch 1909507 Analyze 10/21/19 09:49 AM											
Analyte	Result	Limits	LOQ	Status	Notes	Analyte	Result	Limits	LOQ	Status	Notes
Abamectin	< LOQ	0.50	0.250	pass		Acephate	< LOQ	0.40	0.250	pass	
Acequinocyl	< LOQ	2.0	1.00	pass		Acetamiprid	< LOQ	0.20	0.100	pass	
Aldicarb	< LOQ	0.40	0.200	pass		Azoxystrobin	< LOQ	0.20	0.100	pass	
Bifenazate	< LOQ	0.20	0.100	pass		Bifenthrin	< LOQ	0.20	0.100	pass	
Boscalid	< LOQ	0.40	0.200	pass		Carbaryl	< LOQ	0.20	0.100	pass	
Carbofuran	< LOQ	0.20	0.100	pass		Chlorantraniliprole	< LOQ	0.20	0.100	pass	
Chlorfenapyr	< LOQ	1.0	0.500	pass		Chlorpyrifos	< LOQ	0.20	0.100	pass	
Clofentezine	< LOQ	0.20	0.100	pass		Cyfluthrin	< LOQ	1.0	0.500	pass	
Cypermethrin	< LOQ	1.0	0.500	pass		Daminozide	< LOQ	1.0	0.500	pass	
Diazinon	< LOQ	0.20	0.100	pass		Dichlorvos	< LOQ	1.0	0.500	pass	
Dimethoate	< LOQ	0.20	0.100	pass		Ethoprophos	< LOQ	0.20	0.100	pass	
Etofenprox	< LOQ	0.40	0.200	pass		Etoazole	< LOQ	0.20	0.100	pass	
Fenoxycarb	< LOQ	0.20	0.100	pass		Fenpyroximate	< LOQ	0.40	0.200	pass	
Fipronil	< LOQ	0.40	0.200	pass		Fonicamid	< LOQ	1.0	0.400	pass	
Fludioxonil	< LOQ	0.40	0.200	pass		Hexythiazox	< LOQ	1.0	0.400	pass	
Imazalil	< LOQ	0.20	0.100	pass		Imidacloprid	< LOQ	0.40	0.200	pass	
Kresoxim-methyl	< LOQ	0.40	0.200	pass		Malathion	< LOQ	0.20	0.100	pass	
Metalaxyl	< LOQ	0.20	0.100	pass		Methiocarb	< LOQ	0.20	0.100	pass	
Methomyl	< LOQ	0.40	0.200	pass		MGK-264	< LOQ	0.20	0.100	pass	
Myclobutanil	< LOQ	0.20	0.100	pass		Naled	< LOQ	0.50	0.250	pass	
Oxamyl	< LOQ	1.0	0.500	pass		Paclbutrazole	< LOQ	0.40	0.200	pass	
Parathion-Methyl	< LOQ	0.20	0.200	pass		Permethrin	< LOQ	0.20	0.100	pass	
Phosmet	< LOQ	0.20	0.100	pass		Piperonyl butoxide	< LOQ	2.0	1.00	pass	
Prallethrin	< LOQ	0.20	0.200	pass		Propiconazole	< LOQ	0.40	0.200	pass	
Propoxur	< LOQ	0.20	0.100	pass		Pyrethrin I (total)	< LOQ	1.0	0.500	pass	
Pyridaben	< LOQ	0.20	0.100	pass		Spinosad	< LOQ	0.20	0.100	pass	
Spiromesifen	< LOQ	0.20	0.100	pass		Spirotetramat	< LOQ	0.20	0.100	pass	
Spiroxamine	< LOQ	0.40	0.200	pass		Tebuconazole	< LOQ	0.40	0.200	pass	
Thiacloprid	< LOQ	0.20	0.100	pass		Thiamethoxam	< LOQ	0.20	0.100	pass	
Trifloxystrobin	< LOQ	0.20	0.100	pass							



Terpenes				Method J AOAC 2015 V98-6	Units %	Batch 1909461	Analyze 10/18/19 12:07 PM		
Analyte	Result	LOQ	% of Total	Notes	Analyte	Result	LOQ	% of Total	Notes
(-)-Guaialol [†]	0.619	0.020	35.17%		(-)-caryophyllene oxide [†]	0.511	0.020	29.03%	
β-Caryophyllene [†]	0.450	0.020	25.57%		Humulene [†]	0.0795	0.020	4.52%	
Linalool [†]	0.0594	0.020	3.38%		(-)-a-Terpeneol [†]	0.0411	0.020	2.34%	
(-)-Isopulegol [†]	< LOQ	0.020	0.00%		(-)-β-Pinene [†]	< LOQ	0.020	0.00%	
(+)-Borneol [†]	< LOQ	0.020	0.00%		(+)-Cedrol [†]	< LOQ	0.020	0.00%	
(+)-fenchol [†]	< LOQ	0.020	0.00%		(+)-Pulegone [†]	< LOQ	0.020	0.00%	
(±)-Camphor [†]	< LOQ	0.020	0.00%		(±)-cis-Nerolidol [†]	< LOQ	0.020	0.00%	
(±)-fenchone [†]	< LOQ	0.020	0.00%		(±)-trans-Nerolidol [†]	< LOQ	0.020	0.00%	
(R)-(+)-Limonene [†]	< LOQ	0.020	0.00%		a-Bisabolol [†]	< LOQ	0.020	0.00%	
a-cedrene [†]	< LOQ	0.020	0.00%		a-phellandrene [†]	< LOQ	0.020	0.00%	
a-pinene [†]	< LOQ	0.020	0.00%		a-Terpinene [†]	< LOQ	0.020	0.00%	
Camphene [†]	< LOQ	0.020	0.00%		cis-β-Ocimene [†]	< LOQ	0.006	0.00%	
d-3-Carene [†]	< LOQ	0.020	0.00%		Eucalyptol [†]	< LOQ	0.020	0.00%	
farnesene [†]	< LOQ	0.020	0.00%		gamma-Terpinene [†]	< LOQ	0.020	0.00%	
Geraniol [†]	< LOQ	0.020	0.00%		Geranyl acetate [†]	< LOQ	0.020	0.00%	
Isoborneol [†]	< LOQ	0.020	0.00%		Menthol [†]	< LOQ	0.020	0.00%	
nerol [†]	< LOQ	0.020	0.00%		p-Cymene [†]	< LOQ	0.020	0.00%	
Sabinene [†]	< LOQ	0.020	0.00%		Sabinene hydrate [†]	< LOQ	0.020	0.00%	
β-Myrcene [†]	< LOQ	0.020	0.00%		Terpinolene [†]	< LOQ	0.020	0.00%	
trans-β-Ocimene [†]	< LOQ	0.013	0.00%		valencene [†]	< LOQ	0.020	0.00%	
Total Terpenes	1.76								





Metals

Analyte	Result	Limits	Units	LOQ	Batch	Analyze	Method	Notes
Arsenic	< LOQ		mg/kg	0.100	1909726	10/25/19	AOAC 2013.06 (mod.)	X
Cadmium	< LOQ		mg/kg	0.100	1909726	10/25/19	AOAC 2013.06 (mod.)	X
Lead	< LOQ		mg/kg	0.100	1909726	10/25/19	AOAC 2013.06 (mod.)	X
Mercury	< LOQ		mg/kg	0.100	1909726	10/25/19	AOAC 2013.06 (mod.)	X



These test results are representative of the individual sample selected and submitted by the client.

Abbreviations

Limits: Action Levels per OAR-333-007-0400, OAR-333-007-0210, OAR-333-007-0220

Limit(s) of Quantitation (LOQ): The minimum levels, concentrations, or quantities of a target variable (e.g., target analyte) that can be reported with a specified degree of confidence.

† = Analyte not NELAP accredited.

Units of Measure

cfu/g = Colony forming units per gram

µg/g = Microgram per gram

mg/kg = Milligram per kilogram = parts per million (ppm)

% = Percentage of sample

% wt = µg/g divided by 10,000

Glossary of Qualifiers

X: Not ORELAP accredited.

Approved Signatory

Derrick Tanner
General Manager